



Product overview



GC-3WMPT Pass-Through Metal Connector

Features:

- ✓ Corrugated pipe can be assembled to improve the efficiency of line making;
- ✓ Cable anti-rotation;
- ✓ Through the structural design, the corrugated pipe maintains a strong force after assembly and is not easy to fall out;
- ✓ High strength, superior shielding performance.

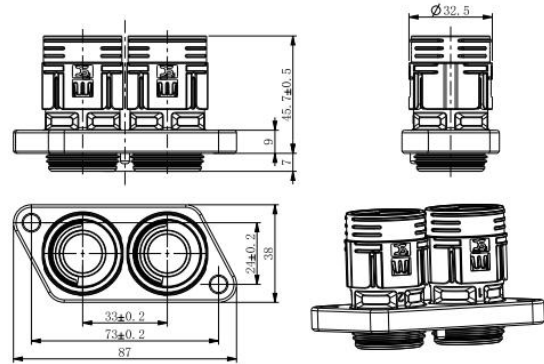
Application: High-voltage and high-current connections between new energy vehicle motor controllers, all-in-one controllers, PDU DC-DC and other equipment

The main technical parameters:

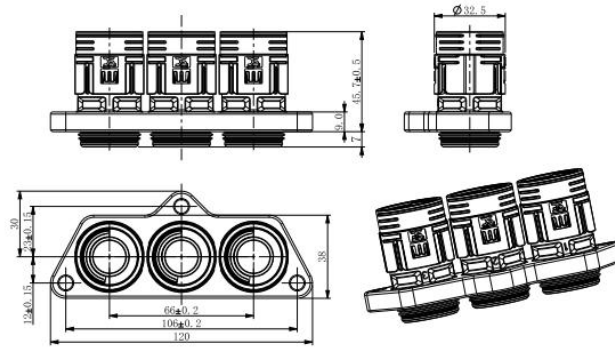
- Number of holes: 1,2 holes, 3 holes
- Applicable wire cross section: 16mm², 25mm², 35mm², 50mm², 70mm²
- Rated voltage: 1000V
- Withstand voltage: 4000V
- Current carrying capacity: up to 300A
- Temperature rating: -40°C~140°C
- Protection level: IP68, IP6K9K
- Installation interface: conform to AK standard
- Salt spray class: 96H
- Mechanical life: 50 times
- Vibration class: V3 vibration class in QC/T 1067.1-2017

MOUNTING PANEL SIZE

DIMENSIONS

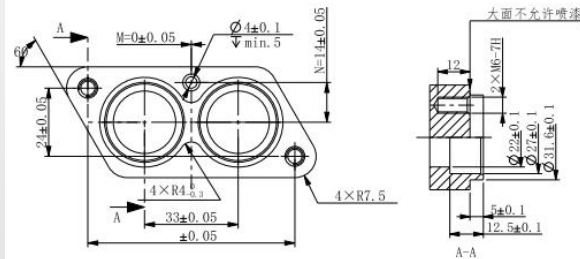


▲ GC3M-21-70/50/35/25/16YP images



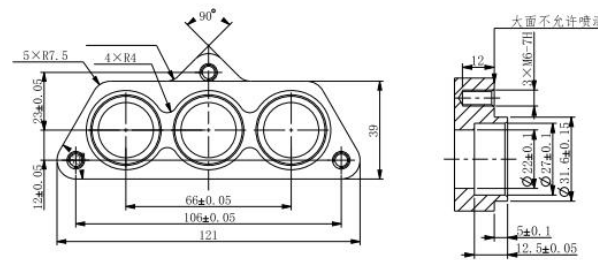
▲ GC3M-31-70/50/35/25/16YP images

HOLE SIZE



A键位: M=0mm, N=14mm;
 B键位: M=5mm, N=16.2mm; (左侧)
 C键位: M=-5mm, N=16.2mm;

▲ GC3M-21-70/50/35/25/16YP hole panel



▲ GC3M-31-70/50/35/25/16YP hole panel

INSTALLATION

GC-3WMPT Pass-Through Metal Connector



- At present, the 3-way pass-through connector has passed the experimental verification, and it is installed in Yutong E12\E10\E8 pure electric buses in batches



Custom Solution Provider

Address:

2A, Building 2, Hongji Xindu, Guanxing East Road, Longhua District,
Shenzhen, China

Email Address:

ec@guchen.com

Website: www.guchen-connector.com