

GCS1-Energy Storage Connector



Product overview

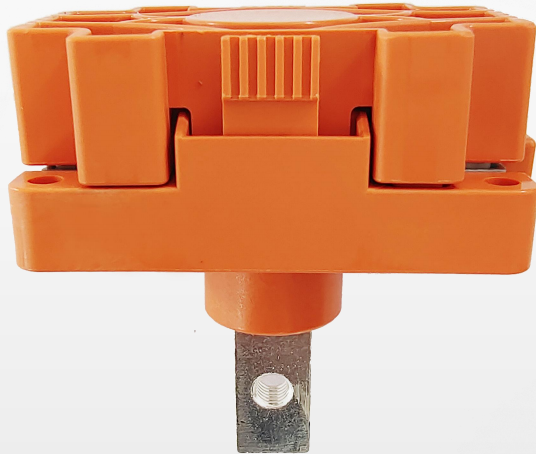


Contact specification		6mm		8mm			12mm			12mm		
cable		16mm²	25mm²	25mm²	35mm²	50mm²	70mm²	95mm²	120mm²	125mm²	135mm²	150mm²
Electrical Properties	Rated current	100A	120A	120A	150A	200A	250A	300A	350A	Max. 500A		
	Rated voltage	600V		1500V								
	Withstand voltage	3000V		4000V								
	Insulation resistance	5000MΩ										
	Remarks: The above insulation resistance is tested in an environment with a temperature below 40°C and a humidity below 50%RH; when the humidity is above 95%, the insulation resistance is ≥300MΩ.											
Mechanical Performance	Pin	1pin										
	Mechanical life	100 times										
	Vibration level	V1 vibration level in QC/T 1067.1-2017										
Environmental resistance	degree of protection	IP67 (optional), IP6K9K, socket sealed separately (optional)								IPXXB/IPXXD		
	Operating temperature	-40°C~125°C										
	Salt spray level	Neutral salt spray 48h (unsealed type); neutral salt spray 480h (sealed type)										
Main material	Shell	nylon										
	Seals	Silicone Rubber										
	contact piece	Silver plated copper										

High Current BESS Connector



Product overview



GCS2 300A Battery Copper Bus Bar Connector

Features:

- ✓ 1. It has a single-seat seal above IP65 and an assembly state seal above IP65;
- ✓ 2. At the same time provide non-waterproof version, optional;
- ✓ 3. The product can realize the installation of two-way copper bars, avoiding unnecessary reinstallation of the direction of the base;
- ✓ 4. The product is easy to operate, and the upper cover can be quickly installed by buckling; at the same time, it can be easily and quickly disassembled for easy maintenance;

Application: Positive and negative high-voltage links between battery packs in chemical energy storage systems

The main technical parameters:

- Temperature rise: <55K
- Withstanding voltage: 3000V AC
- Working current: 300A min
- Working temperature: -40°C ~ +125°C
- Protection class: IP65
- Contact resistance: 0.5 mΩ max



Custom Solution Provider

Address:

2A, Building 2, Hongji Xindu, Guanxing East Road, Longhua District,
Shenzhen, China

Email Address:

ec@guchen.com

Website: www.guchen-connector.com